



Hewlett Packard
Enterprise

使用者體驗優先的 AI 驅動智能網路運營

Yvonne Ding
HPE Aruba Networking Territory Manager

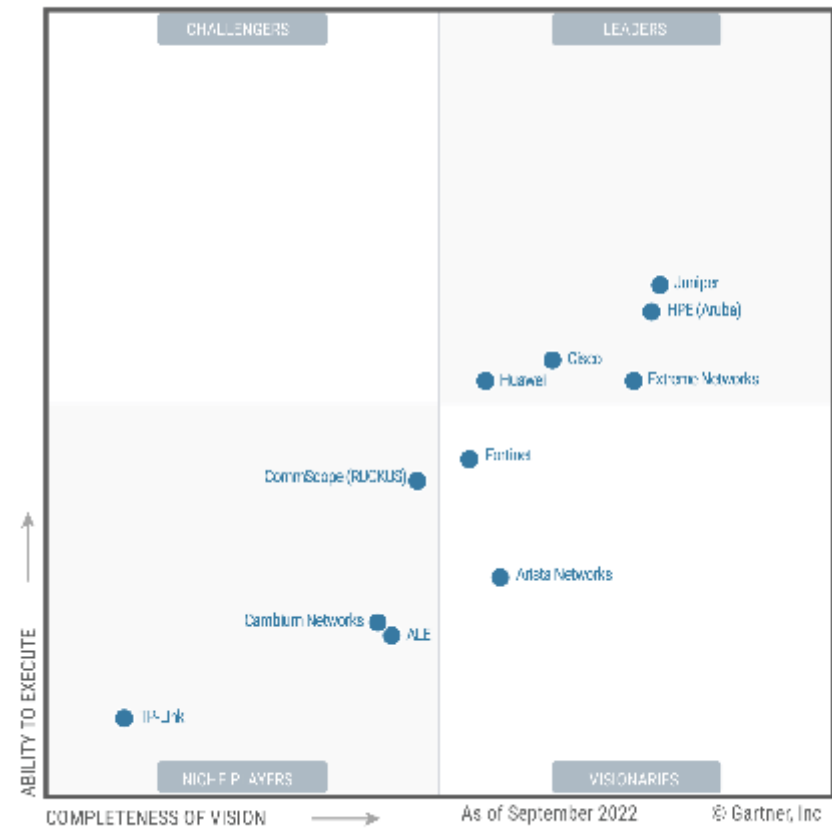


2023 Gartner® Magic Quadrant™ for Enterprise Wired and Wireless LAN Infrastructure

HPE Aruba Positioned as a Leader in the Gartner Magic Quadrant for Enterprise Wired and Wireless LAN Infrastructure

Aruba's 18th Time
In The Leaders
Quadrant¹

Figure 1: Magic Quadrant for Enterprise Wired and Wireless LAN Infrastructure



Gartner Magic Quadrant for Enterprise Wired and Wireless LAN Infrastructure, By Mike Toussaint, Tim Zimmerman, Christian Canales, Published 21 December 2022
Aruba's 17 years of placement includes HPE (Aruba) in the Magic Quadrant for Wired & Wireless LAN Infrastructure from 2015-2022 (8 years), Aruba Networks in the same Magic Quadrant from 2012-2014 (3 years) and in the Magic Quadrant for Wireless LAN Infrastructure from 2006-2011 (6 years).

This graphic was published by Gartner, Inc. as part of a larger research document and should be evaluated in the context of the entire document. The Gartner document is available upon request from Aruba, a Hewlett Packard Enterprise company. Gartner does not endorse any vendor, product or service depicted in its research publications, and does not advise technology users to select only those vendors with the highest ratings or other designation. Gartner research publications consist of the opinions of Gartner's research organization and should not be construed as statements of fact. Gartner disclaims all warranties, expressed or implied, with respect to this research, including any warranties or merchantability or fitness for a particular purpose.

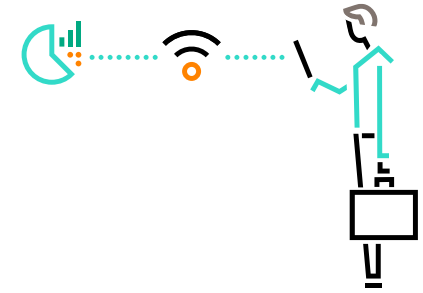
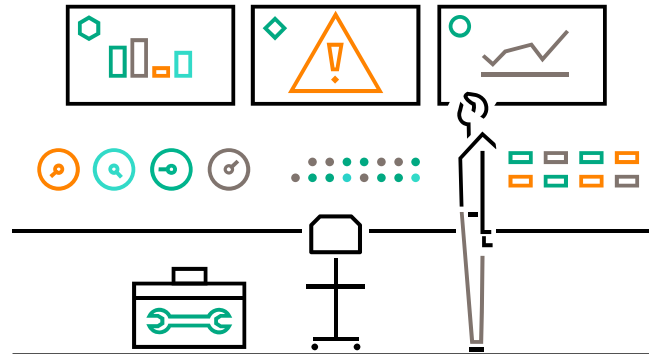
HPE Aruba 台灣成功案例



Designed for the modern IT operator

Resiliency and agility for new campus demands

HPE Aruba 為所有裝置和使用者提供**可靠的連接**，
動態增強整個校園到家庭網路的資料**安全**，
並以家庭般的**簡單**改善學生的使用者體驗。



Unify & simplify

Access across locations, users and IoT

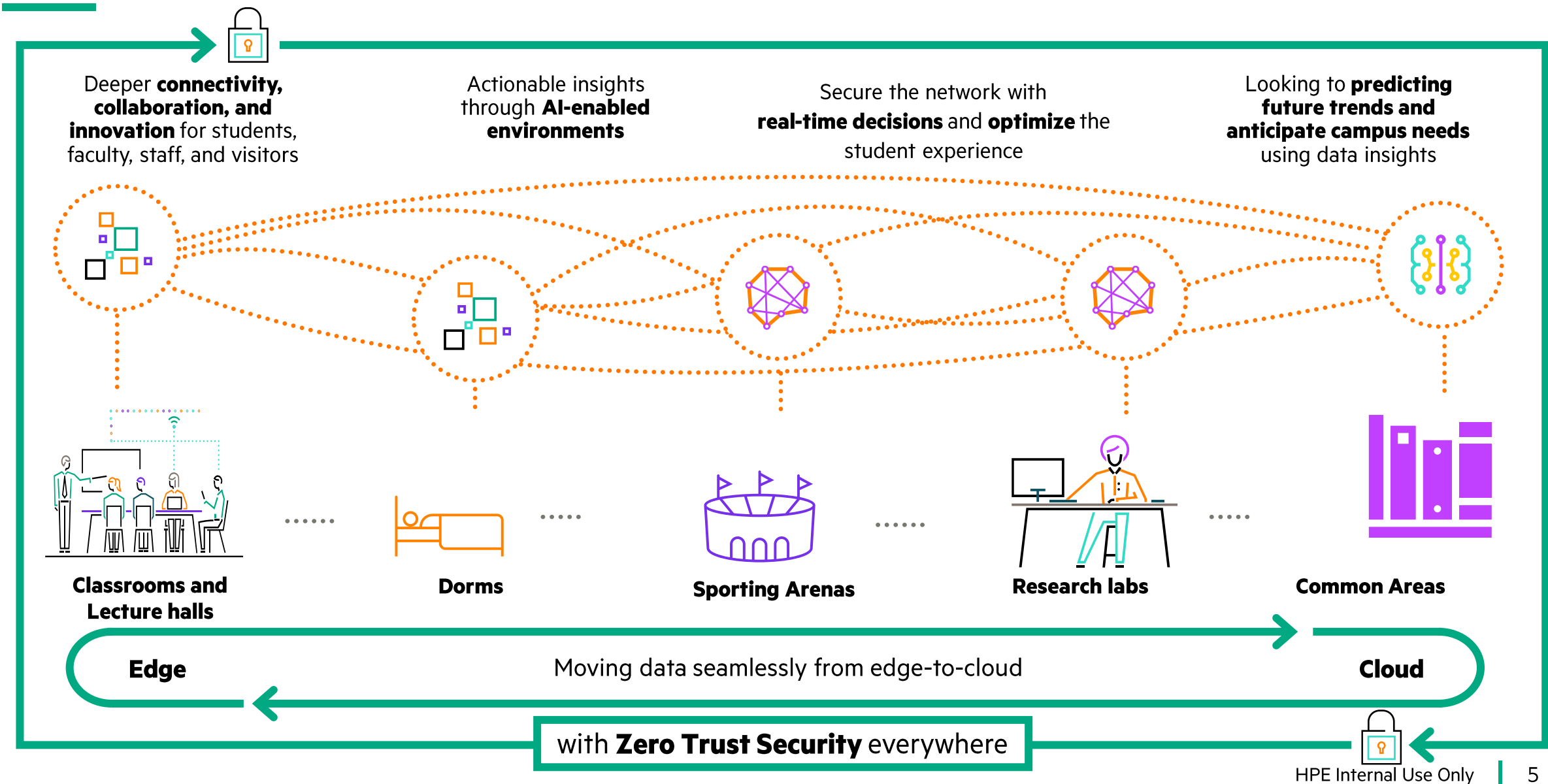
Automate & secure

IT operator experiences with AIOps

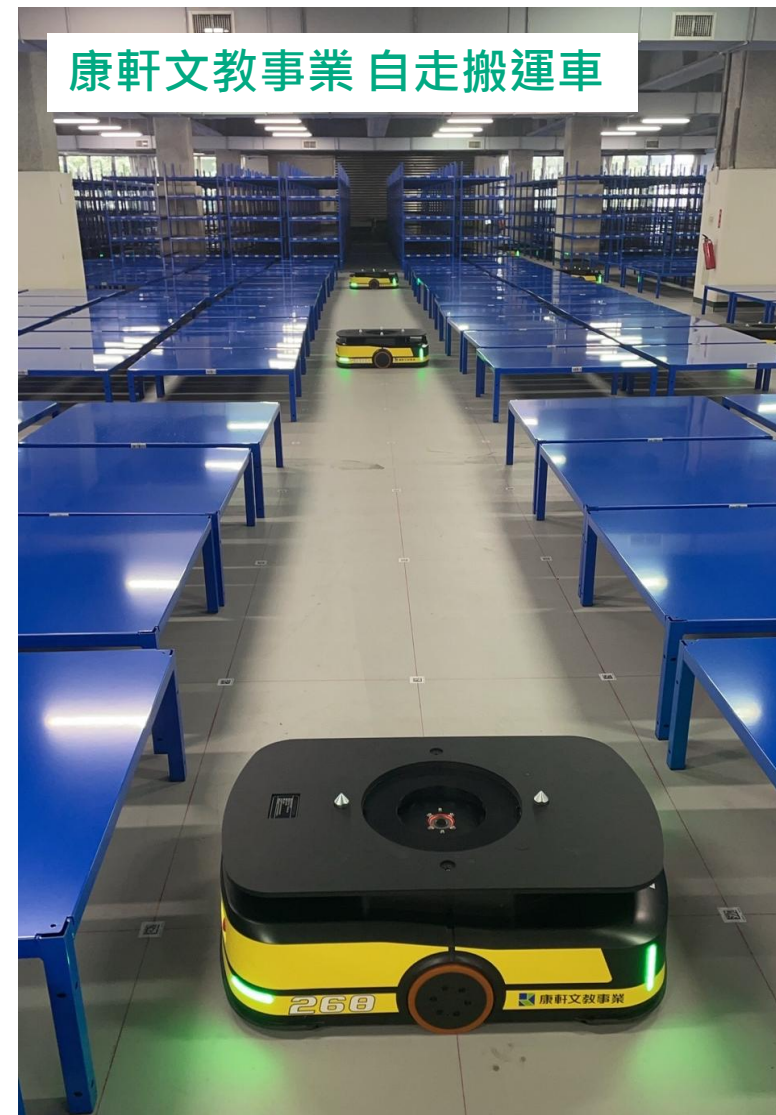
Choice

Your network, your way with agile NaaS

HPE Aruba Networking enables transformation from edge-to-cloud



HPE Aruba reference in Library



「圖書館、討論室或自修區，有配置無線網路？」



HPE Aruba Networking Solutions

AI Powered
以終為始的使用者體驗



網路維運的未來

AI for Networking Empowering IT teams for an accelerated, AI-driven future

Accelerating **GenAI** for
Networking
Realising greater efficiencies



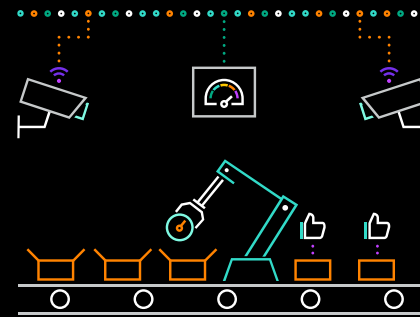
By 2026, **60%** of network operations personnel will rely on **Generative AI** for Day 2 management, up from less than 5% in early 2024¹

Network as a **Zero Trust** security solution



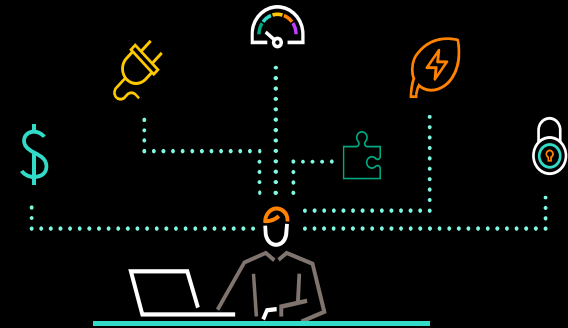
46% ITDMs say **cybersecurity concerns** impact their organizations' willingness to invest in innovative technologies²

Growing significance of
DEM



Digital Experience Monitoring becomes a strategic investment area, with deployments expected to rise from **60% to 90%** in 2027³

Sustainability



83%⁴ of business leaders say **sustainability** activities create value of their organization

¹Gartner: Prepare for Generative AI in Network Operations, Mar 2024

²The innovation vs. risk conundrum. Hewlett Packard Enterprise. 2023

³Gartner Market Guide for Digital Experience Monitoring, Nov 2023

⁴2022 sustainability survey :use Sustainability to drive vlaue and mitigate disruption ,Sept 22

AI-powered: Aruba Next-Generation Cloud-Native Central Platform

有數據才有AI

Reduce manual configuration
and administrative work

15%+ **Improve network
performance**

Enhanced Visibility &
Anomaly detection

Up to
99% Accuracy of analysis for
known clients, unknown
rate of <5%

Improve the user experience

95% Calls to IT help desk assistance
are reduced due to HPE Aruba
network Wi-Fi usage issues

Industry-leading data lake



Wireless



Wired



SD-WAN



5G



IoT

Unified Infrastructure

180K+

Central accounts

~6M

devices
under mgmt

~1B

endpoints
served

30+

Industry
verticals

AI Ops For Improved Troubleshooting And Issue Resolution

POWERFUL FEATURES

AI Search
with GenAI

AI
insights

AI
assurance indicators

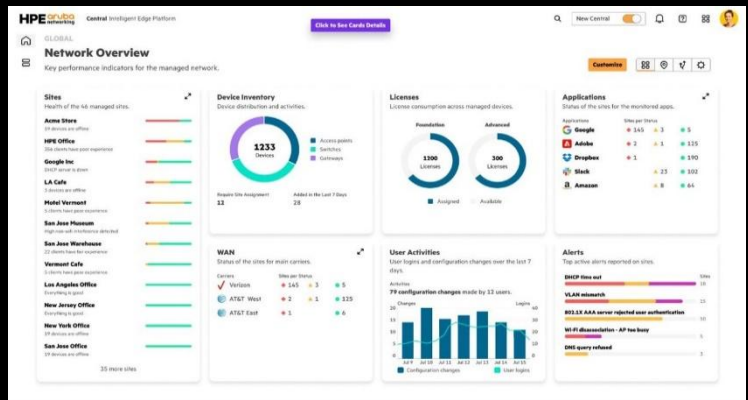
Client
insights

Incident
Detection

Gen AI
Large Language Models (LLMs)

Classification AI
Clustering, Correlation, Regressions

POWERFUL RESULTS



Faster MTTR

63%

Of surveyed customers resolve
network or user issues at least
50% faster

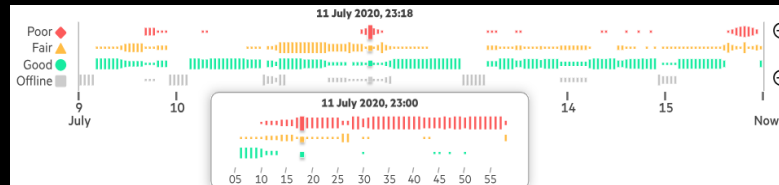
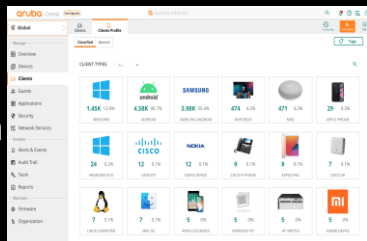
Fewer support
tickets

38%

Of surveyed customers have
reduced IT trouble tickets by
at least **50%**

Acme Store 019334

- Network**: Fair (13 Devices)
- Clients**: 10
- Applications**: 26
- Security**: Risk (Low to High scale)
- Alerts**: 8



Define, discover and profile

Monitor, AI Green AP and Sustainability

Configure and provision

Onboard infrastructure

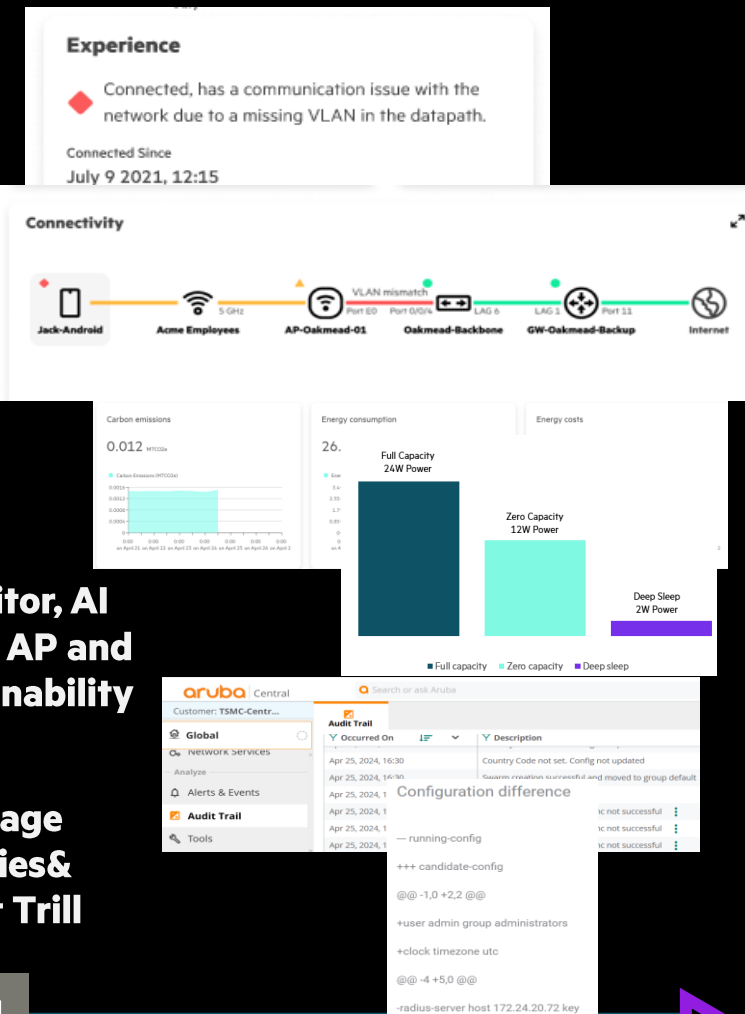
DAY 0

DAY N

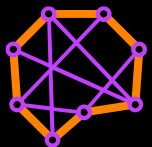
Edge

Campus and Data Center

Public Cloud



Meet the newest member of your IT Team



A CONVERSATIONAL CO-PILOT PREVIEW



Privacy Enabled Security
PII & CII protected



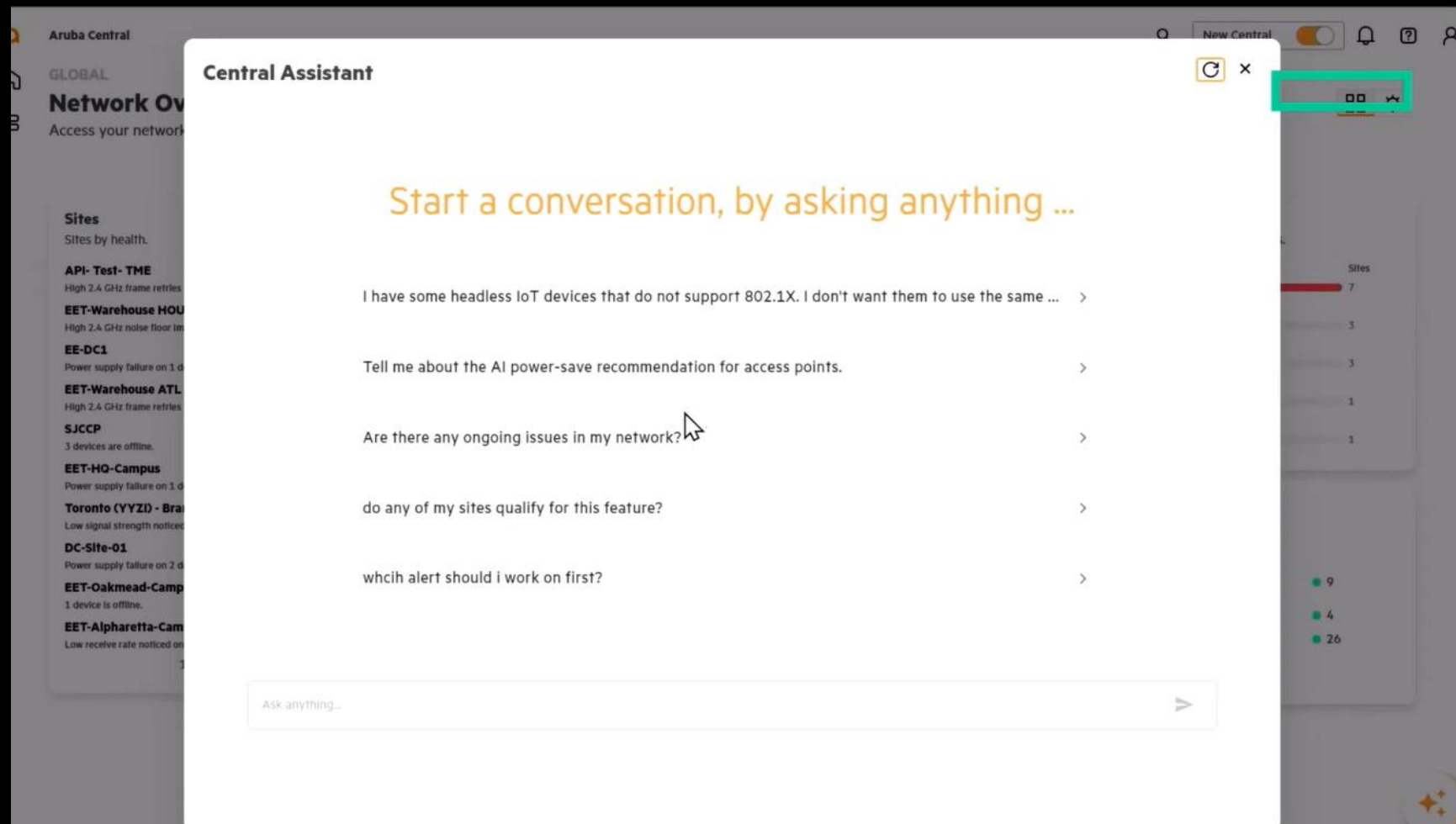
LLM trained with public HPE data



Contained and hosted on HPE Greenlake Cloud Platform

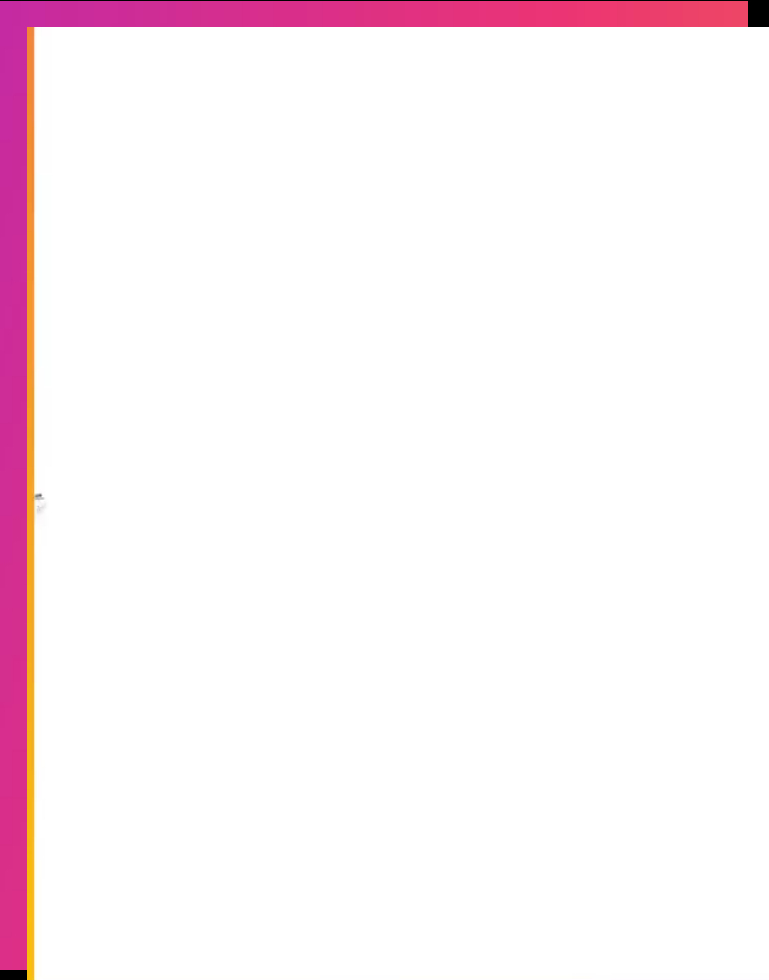


HPE Artificial Intelligence (AI) Ethics Council



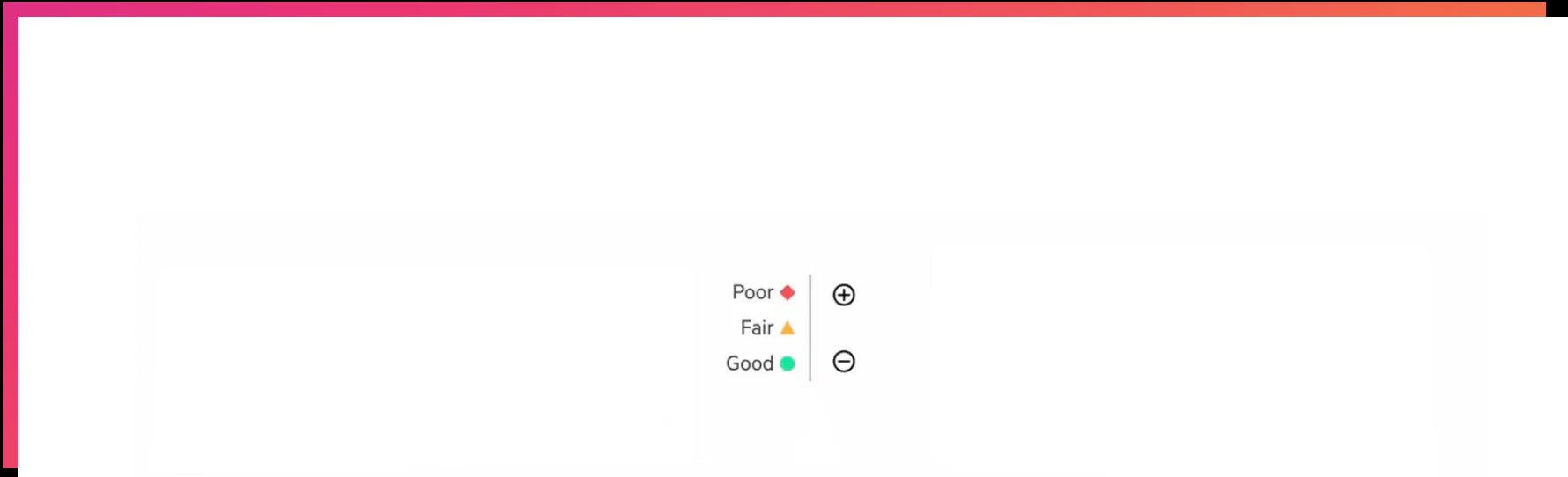
以實體為中心 ‘solar system’ 視圖

Reduce navigation clicks and minimize manual correlation

- 
- Promotes **quicker discovery** without navigating across several screens and tables
 - **Proactive summarization** with ‘blended’ indicators
 - **Seamless switching** between site, network devices, clients, applications etc.
 - Access to **unified network** device and client lists

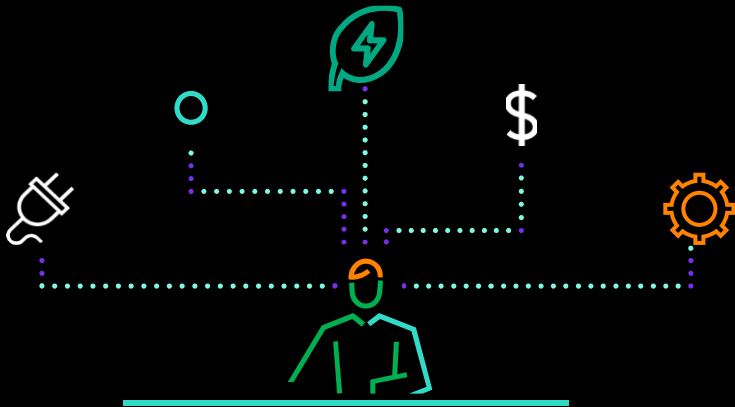
行業首創的網路 ‘time travel’

Helping IT teams answer ‘What changed? When? Why?’



- Holistic ‘**point in time**’ network snapshot to troubleshoot difficult issues
- Deep correlation that goes beyond manual analysis of event logs and packet captures
- Move back in time for up to **7 days** , with granularity of **1 min**
- On selecting a timestamp, all dashboard views reflect what the network looked like at that point

AI 驅動節能建議-支持可持續性



Jeff, Manager of NetOps

Tasked with making **network operations more sustainable**, in support of overall IT goals for the business

Power Save Recommendation Summary - Access Points

Key Power Save metrics.

Power Save metrics	Values
Average Power Save hours per week	113 hour(s)
Percentage of Access Points in Power Save	25%
Expected annual power savings	86 KWh

Actions - Access Points

Review recommended Power Save schedules and list of APs to put in Power Save mode. These can be applied in Classic Central with automatic Power Save configuration.

View

Next-gen Central provides recommendations to identify access points in the network that can be turned to power save mode to save on energy consumption. APs (10.5 and above) switch into a dynamic power save mode and automatically wake up at a schedule when connectivity demand arises, **reducing power demands and saving money** in alignment with the organization's **sustainability initiatives**.



HPE Aruba User Experience Insight



Experience

- LLT-Sensor



Services

- Wi-Fi
- Ethernet
- DHCP
- Gateway
- DNS



Internal

- 172.16.30.253-Web
- 172.16.30.40-Web
- 172.16.30.43-Web
- Aruba-networks
- FTP



External

- Dropbox
- Facebook
- Google
- Google Docs
- Google Drive
- Google Mail
- JIRA(External)
- Webserver-aruban...
- YouTube

Deliver what users and stakeholders expect



Student Priorities

- ✓ Performance and roaming
- ✓ College experience
- ✓ Home-like residence hall



Faculty Priorities

- ✓ Save time
- ✓ Secure data
- ✓ Teach students in all modalities



Facilities Priorities

- ✓ Cost savings
- ✓ Efficient operations

HPE Aruba Networking Solutions

AI Powered

以終為始的使用者體驗



Yvonne Ding
Territory Manager

E: yvonne.ding@hpe.com

M: +886-903-227-070

